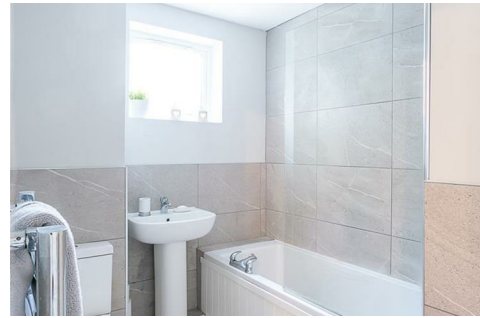




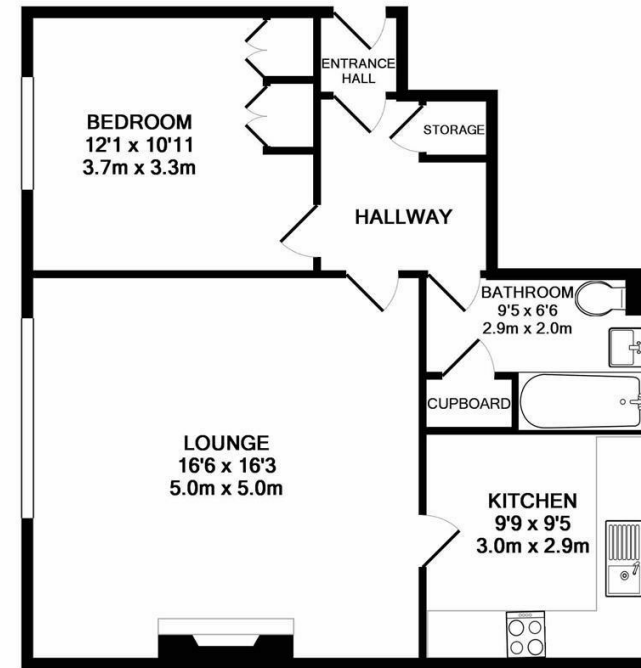
****AVAILABLE IMMEDIATELY****
****FURNISHED** **GARAGE** **ONE**
BEDROOM APARTMENT** An absolutely stunning ground floor apartment in the heart of Jesmond Park East. Found in the Wyncote Court development, this ground floor property boasts very tasteful decor, tasteful furniture, a large double bedroom with fitted storage and also a separate garage!

The property briefly comprises a communal entrance hallway with access to the apartment front door. There is an internal hallway with handy storage cupboard. There is an impressive 16 ft. lounge, bright and spacious with an electric fireplace and stylish furniture. There is a modern fitted kitchen with appliances including an electric oven & hob, fridge freezer and a separate washing machine and tumble dryer. There is a plush re-fitted bathroom, with tiled walls & flooring as well as a three piece suite. Finally there is a large double bedroom, with fitted wardrobes and a double bed. Externally there are well kept communal gardens surrounding the development, as well as a separate garage.

Available Immediately | £795pcm |
 Furnished | Very Well Presented
 Throughout | Ground Floor Apartment |
 618 Sq ft (57.4 m2) | Garage | Lounge |
 Modern Kitchen | One Double Bedroom |
 Plush Bathroom WC | Communal Gardens |
 Great Location | Off Street Parking |



Electric Heating | DG | Professional Let |
 EPC Rating: D



TOTAL APPROX. FLOOR AREA 618 SQ.FT. (57.4 SQ.M.)

Whilst every attempt has been made to ensure the accuracy of the floor plan contained here, measurements of doors, windows, rooms and any other items are approximate and no responsibility is taken for any error, omission, or mis-statement. This plan is for illustrative purposes only and should be used as such by any prospective purchaser. The services, systems and appliances shown have not been tested and no guarantee as to their operability or efficiency can be given
 Made with Metropix ©2017

£795 PCM

Misrepresentation Act 1967. These particulars and the descriptions and measurements herein do not constitute representation and whilst every effort has been made to ensure accuracy, this cannot be guaranteed.

